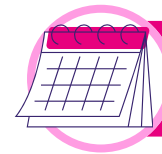


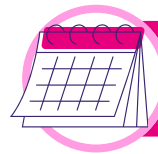
Mentor Software 2026 Calendar

- Operational
- Training
- Regulatory
- Sector & Awareness
- Compliance



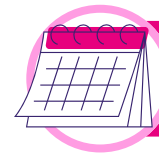
January

- 5: Spring term begins
- Annual workforce training needs analysis
- Fire safety refresher
- Safeguarding L3 refresher
- Early Jan: Year-start governance review
- Early Jan: Annual review of Reg 44 summary cycles
- Early Jan: Ofsted Annual Report
- 19: Blue Monday
- 29: Young Carers Awareness Day



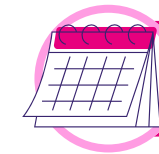
February

- 2–8: Children's Mental Health Week
- 10: Safer Internet Day
- LGBT+ History Month
- Monthly: Missing audit, MAR audit, H&S checks
- Policy review cycle check-in
- 16–20: School Holidays: February half-term
- Chinese New Year
- 18–19: Ramadan starts



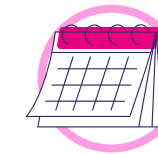
March

- 1: Self-Harm Awareness Day
- 6–20: Social Work Week
- 16–22: Neurodiversity Celebration Week
- 17: World Social Work Day
- 20: Eid Celebrations
- 18: CSE Awareness Day
- 31: End of the Ofsted Inspection Year
- DfE social care data publications (TBC)
- Annual escalation & restraint review
- Annual Reg 45 cycle alignment



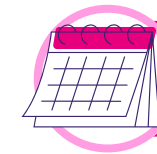
April

- 3–17: School Holidays: Easter break
- 1: New Ofsted Inspection Year begins
- Updated Ofsted guidance typically released
- Statement of Purpose annual review
- Fire risk assessment schedule review
- Stress Awareness Month
- 2: World Autism Awareness Day
- 16: Youth Homelessness Matters Day



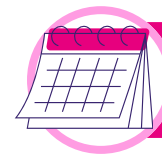
May

- 11–17: Mental Health Awareness Week
- 11–24: Foster Care Fortnight
- Quarterly safeguarding audit
- Quarterly risk register update
- 25–29: School Holidays: Summer half-term



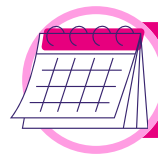
June

- Ofsted Social Care Stakeholder Event
- NACH Annual Conference
- Pride Month
- 15–19: Loneliness Awareness Week
- 15–21: Learning Disability Week



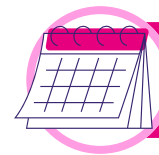
July

- 3: National Bereaved Parents Day
- 20: Summer holidays begin
- 24: Samaritans Awareness Day



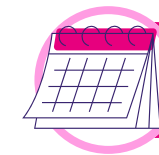
August

- Mid-year incident trend review
- Annual MAR/responses audit
- Policy review updates



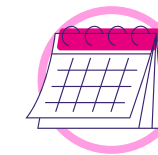
September

- 1: School term begins
- KCSIE 2026 guidance comes into force
- Ofsted often releases guidance updates
- New risk assessments for education attendance
- 7: Youth Mental Health Day
- 7–13: National Suicide Prevention Week



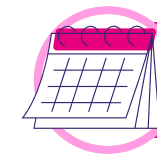
October

- 8: Children & Young People Conference
- LADO Network Conference (TBC)
- Black History Month
- 10: World Mental Health Day
- 23–31: National Care Leavers Week
- 26–30: Autumn half-term



November

- NASAP Supported Accommodation Conference (TBC)
- Ofsted publish annual children's homes data (TBC)
- 8: Diwali
- 13: Children in Need
- 13–19: Trans Awareness Week
- 16–20: Anti-Bullying Week



December

- Year-end data audit (incidents, MARs, missing episodes)
- Holiday safeguarding review
- Annual staffing contingency planning
- End-of-year delegated task audit
- 21–4 Jan: School Holidays: Christmas break